

abbotFox

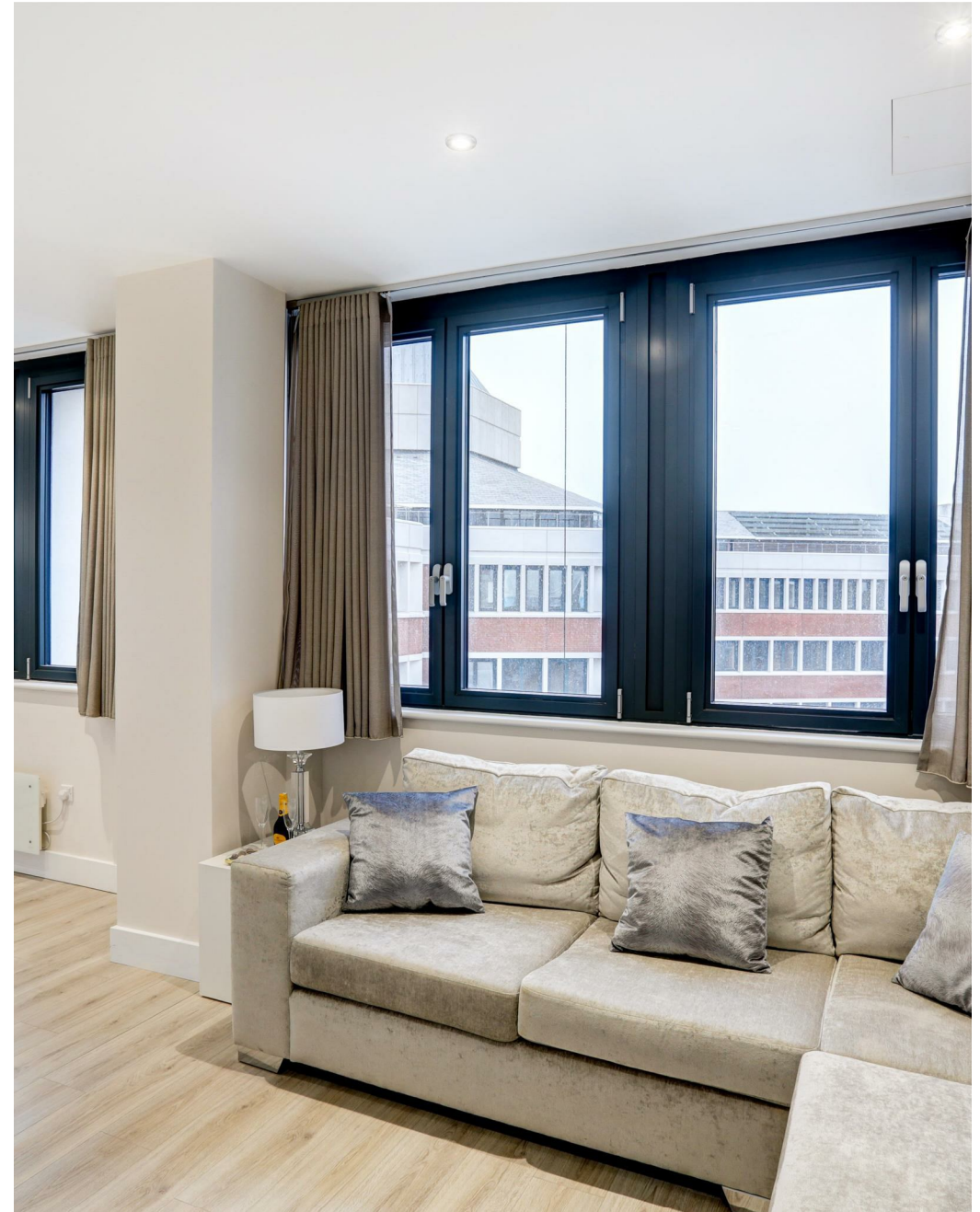


Sentinel House, Norwich, NR1
£1,200 PCM

“

We are a team of genuine individuals who hold a deep passion for both property and marketing. Collectively, we bring over 70 years of experience in the property market of Norfolk and Suffolk. Our affection for both counties runs deep, and we are enthusiastic about sharing our passion with you.

Colin McKenzie | **Branch Partner**







THE DETAIL _____

AbbotFox presents this second floor two bedroom apartment.

Sentinel House is our city's newest and most exciting residential development offering something Norwich has never seen before. Within the cultivated walls of this iconic landmark, Sentinel House delivers outstanding modern living with a concierge service, residents' gym and residents' lounge all within Norwich's vibrant city centre.

Sentinel House is fully submersed in the city centre and empowers walking ease of Norwich's nationally acclaimed shopping facilities, quirky cafes and restaurants, exciting nightlife and its quintessential culture and history. The apartments are an ideal match for commuters, who need to reside within touching distance of both the bus and train stations.

Contemporary specification has ensured that Sentinel House weds effortlessly with the building's heritage past. This exclusive development has been meticulously presented and offers authentic living space, perfect for city dwellers who are seeking a home in the urban centre. The apartment is offered unfurnished.

The developed blueprints guarantee that all apartments are fitted with modern appliances, stylish finishes and fresh air ventilation.

Early enquiries are encouraged to avoid disappointment.



THE HIGHLIGHTS _____

- Concierge service
- Residents' lounge
- Residents' gym
- Norwich's most exciting development
- City centre location
- Opposite John Lewis

Let's talk

01603 660000

sales@abbotfox.co.uk

[@abbotfox](#)

EPC RATING -

Disclaimer – In accordance with the Property Misdescriptions Act, the company abbotFox gives notice that all descriptions, references to condition, necessary permissions for use and other details are given in good faith and believed to be correct, but any purchaser should not rely on them as statements of fact, and must satisfy themselves by inspection or other means, as to their accuracy.